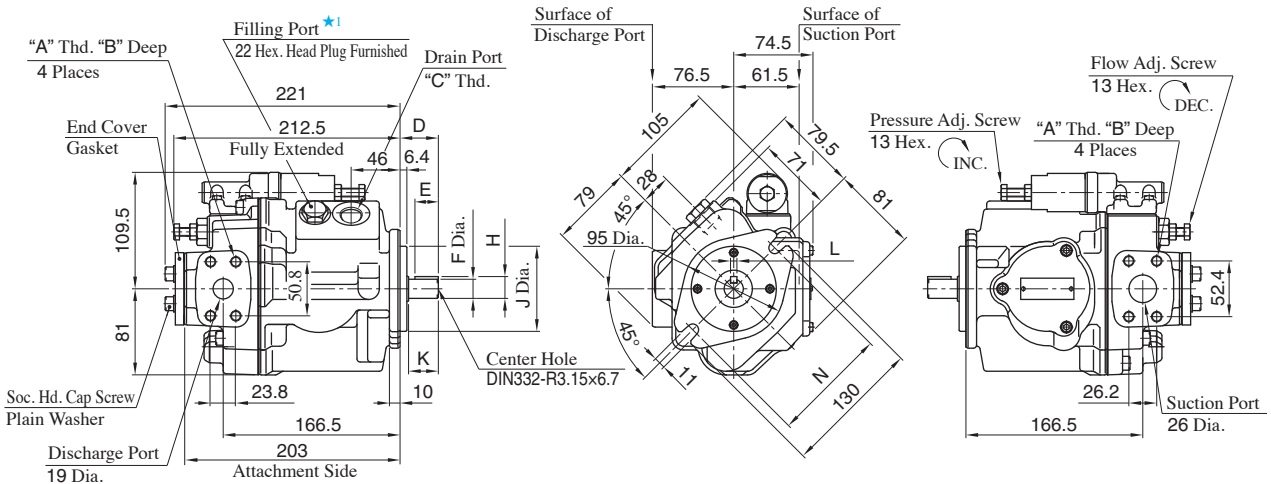


## Flange Mtg.:A3HG16-FR01KK-E1C/U1C/U2C/J1C



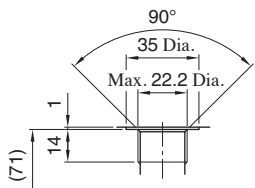
★1. Install the pump so that the "Filling Port" is at the top.

Model Numbers	A	B	C	D	E	F	H	J	K	L	N	Mounting Flange	Connecting Port	Pipe Flange Threads
A3HG16-FR01KK-E1C	M10	19	M22X1.5	36	22	18 <sup>+0.008</sup> <sub>-0.003</sub>	20.5 <sup>+0.008</sup> <sub>-0.133</sub>	80 <sup>0</sup> <sub>-0.046</sub>	28	6 <sup>0</sup> <sub>-0.03</sub>	109	Conforms to ISO 3019-2	Metric	Metric
A3HG16-FR01KK-U1C	3/8-16 UNC	17	G 1/2	41	28	19.05 <sup>0</sup> <sub>-0.03</sub>	21.24 <sup>0</sup> <sub>-0.16</sub>	82.55 <sup>0</sup> <sub>-0.05</sub>	33	4.76 <sup>+0.03</sup> <sub>0</sub>	106	Conforms to ISO 3019-1	Unified	Unified
A3HG16-FR01KK-U2C	M10	19	G 1/2	41	28	19.05 <sup>0</sup> <sub>-0.03</sub>	21.24 <sup>0</sup> <sub>-0.16</sub>	82.55 <sup>0</sup> <sub>-0.05</sub>	33	4.76 <sup>+0.03</sup> <sub>0</sub>	106	Conforms to ISO 3019-1	BSPP	Metric
A3HG16-FR01KK-J1C	M10	19	G 1/2	41	28	19.05 <sup>0</sup> <sub>-0.03</sub>	21.24 <sup>0</sup> <sub>-0.16</sub>	82.55 <sup>0</sup> <sub>-0.05</sub>	33	4.76 <sup>+0.03</sup> <sub>0</sub>	106	Conforms to ISO 3019-1	Rc	Metric

## Drain Port

For Port/Flange Code "U1/J1", Adapter and bonded seal are attached. After installing the bonded seal at the drain port tighten the adapter

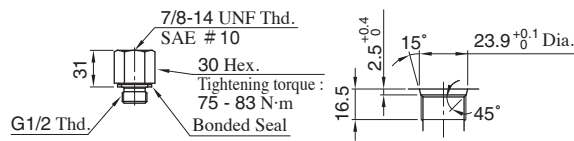
### Detail:A3HG16-FR01KK-E1C



Detail of Drain Port ★2

★2. Drain port conforms to ISO 9974-1, metric threads.

### Accessories:A3HG16-FR01KK-U1C

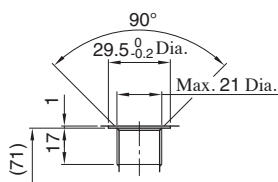


Adapter

Detail of Adapter Port ★3

★3. Adapter port conforms to SAE J 514, O-Ring seals.

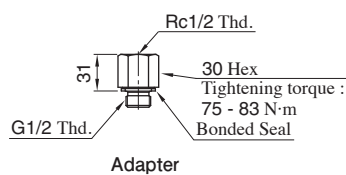
### Detail:A3HG16-FR01KK-U2C



Detail of Drain Port ★4

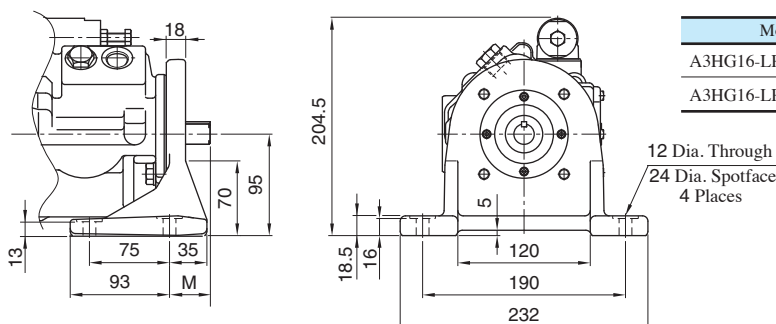
★4. Drain port conforms to ISO 1179-1, BSPP threads.

### Accessories:A3HG16-FR01KK-J1C



Adapter

## Foot Mtg.:A3HG16-LR01KK-E1C/U1C/U2C/J1C



Model Numbers	M
A3HG16-LR01KK-E1C	33
A3HG16-LR01KK-U1C/U2C/J1C	38

● For other dimensions, refer to "Flange Mtg.".