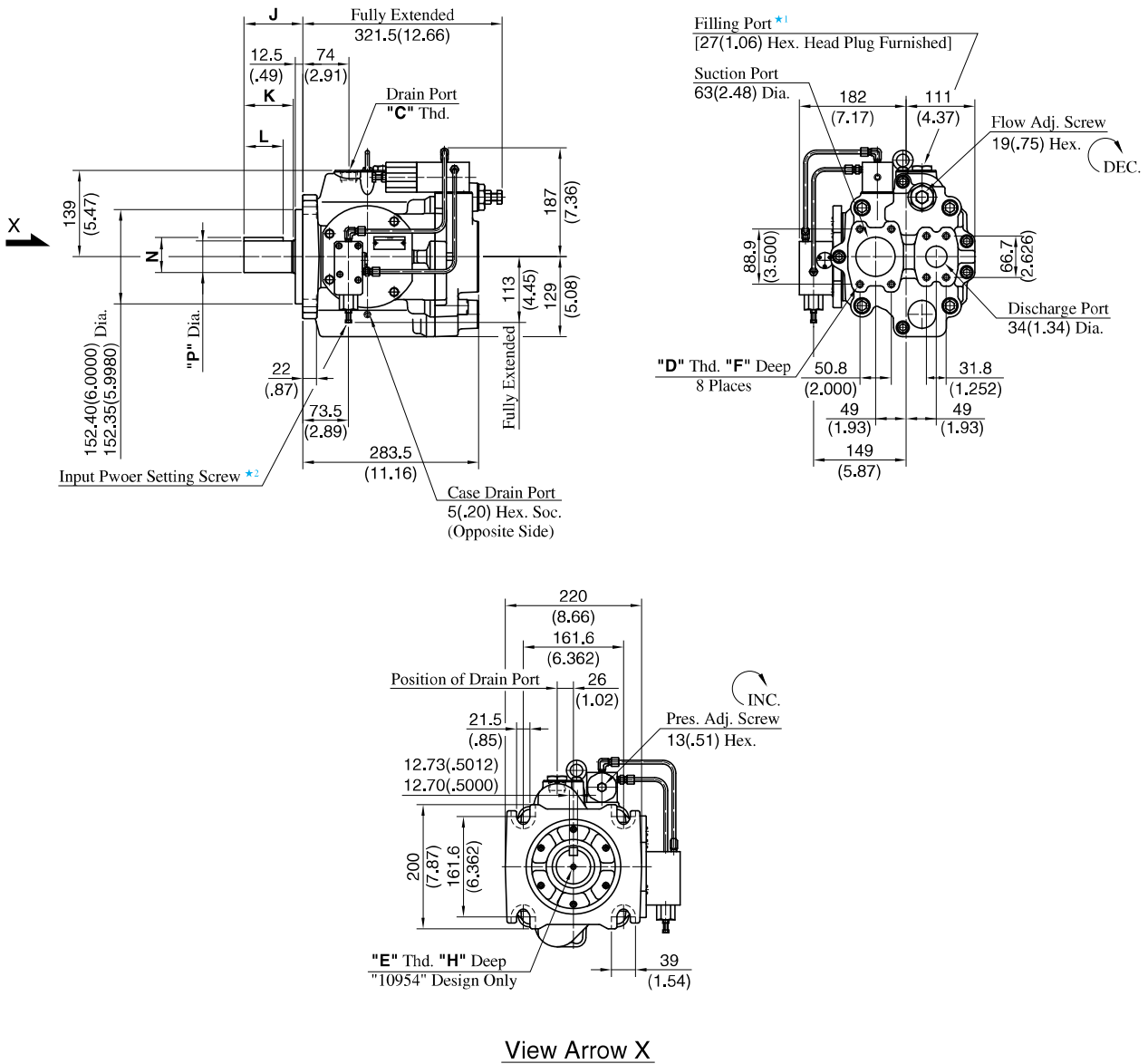


Flange Mtg.: A3H145-FR09-***K*-10/1080/10954



| Model Numbers | Thread Size | | | Dimensions mm (Inches) | | | | | | |
|-------------------------|-------------|------------|------------|------------------------|-----------|-------------|-------------|-----------|---------------|----------------|
| | C | D | E | F | H | J | K | L | N | P |
| A3H145-FR09-***K-10 | Rc 3/4 | M12 | — | 19 (.75) | — | 95 (3.74) | 81 (3.19) | 63 (2.48) | 56.43 (2.222) | 50.80 (2.0000) |
| A3H145-FR09-***K-1080 | 3/4 BSP.F | | | | | | | | 56.25 (2.215) | 50.75 (1.9980) |
| A3H145-FR09-***K-10954 | SAE #12 | 1/2-13 UNC | 1/2-13 UNC | 21 (.83) | 32 (1.26) | 74.6 (2.94) | 60.6 (2.39) | 50 (1.97) | 49.39 (1.944) | 44.45 (1.7500) |
| A3H145-FR09-***K1-10954 | | | 5/8-11 UNC | | | | | | 36 (1.42) | 56.43 (2.222) |
| | | | | | | | | | 56.25 (2.215) | 50.75 (1.9980) |

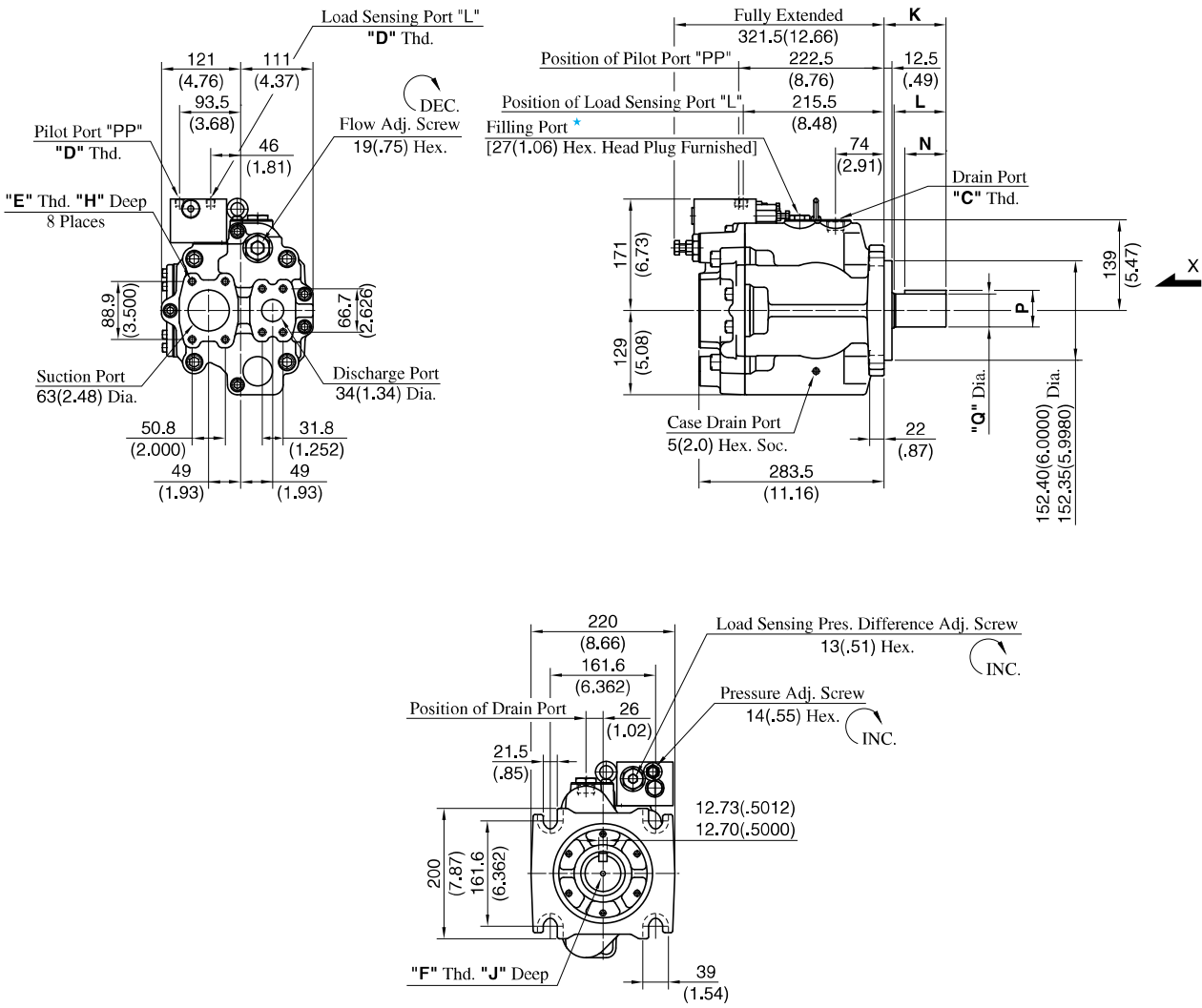
- ★ 1. Install the pump so that the "Filling Port" is at the top.
- ★ 2. Do not touch the screw because it is adjusted at the time of shipment.

**DIMENSIONS IN
MILLIMETRES (INCHES)**

● **Foot Mounting Type**

Mounting bracket is common to that of pressure compensator model.
Refer to [page 137](#) for the dimensions of mounting bracket.

Flange Mtg.: A3H145-FR14K*-10/1080/10954



View Arrow X

| Model Numbers | Thread Size | | | Dimensions mm (Inches) | | | | | | | |
|---------------------|-------------|-----------|------------|------------------------|-----------|-------------|-------------|-----------|---------------|----------------|----------------|
| | C | D | E | F | H | J | K | L | N | P | Q |
| A3H145-FR14K-10 | Rc 3/4 | Rc 1/4 | M12 | — | 19 (.75) | — | 95 (3.74) | 81 (3.19) | 63 (2.48) | 56.43 (2.222) | 50.80 (2.0000) |
| A3H145-FR14K-1080 | 3/4 BSP.F | 1/4 BSP.F | | | | | | | | 56.25 (2.215) | 50.75 (1.9980) |
| A3H145-FR14K-10954 | SAE #12 | SAE #4 | 1/2-13 UNC | 21 (.83) | 32 (1.26) | 74.6 (2.94) | 60.6 (2.39) | 50 (1.97) | 49.39 (1.944) | 44.45 (1.7500) | |
| A3H145-FR14KI-10954 | | | 5/8-11 UNC | | 36 (1.42) | | | | 49.21 (1.937) | 44.40 (1.7480) | |
| | | | | | | | | | | 56.43 (2.222) | 50.80 (2.0000) |
| | | | | | | | | | | 56.25 (2.215) | 50.75 (1.9980) |

★ Install the pump so that the "Filling Port" is at the top.

DIMENSIONS IN MILLIMETRES (INCHES)

● Foot Mounting Type

Mounting bracket is common to that of pressure compensator model. Refer to page 137 for the dimensions of mounting bracket.