

Relief Modular Valves

Specifications

Model Numbers	Max. Operating Pressure MPa	Max. Flow L/min
MB *-03- *-70	35	120

Model Number Designation

MBA	-03	-B	-70
Series Number	Valve Size	Pres. Adj. Range MPa	Design Number
MBP: Relief Valve for P-Line MBA: Relief Valve for A-Line MBB: Relief Valve for B-Line MBW: Relief Valve for A&B-Lines	03	B: ★-7 C: 3.5-14 K: 7-35	70

★ See the "Min. Adjustment Pressure" of this page.

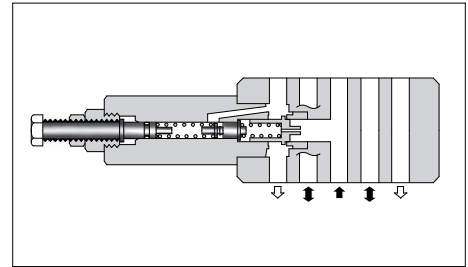
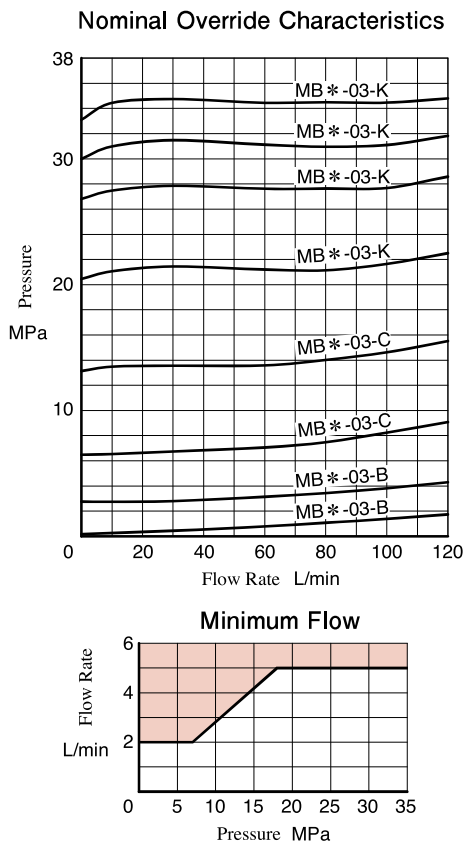
Instructions

The minimum adjustment pressure equals the value obtained from the minimum adjustment pressure characteristics plus the tank line back pressure of this page. This back pressure should include the value of the T-line pressure drop characteristics of the valves stacked to the base plate side of the modular valve. To make pressure adjustment, loosen the lock nut and turn the pressure adjustment screw clockwise or anti-clockwise. For an increase of pressure, turn the screw clockwise. Be sure to re-tighten the lock nut firmly after making adjustment to the pressure.

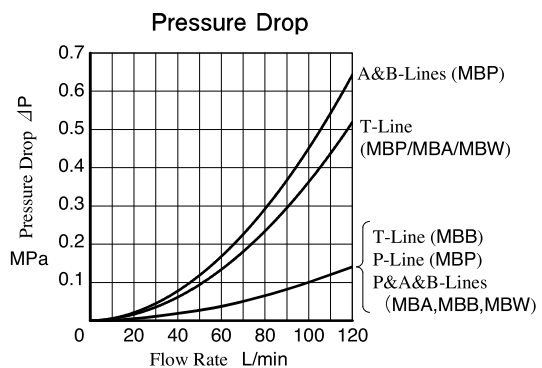
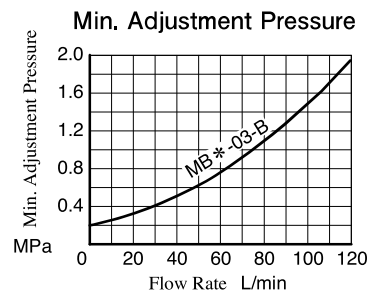
In case of a small flow, the setting pressure may become unstable. To avoid this, refer to the minimum flow characteristic curve of this page and use the valve within a range as shown with .

Typical Performance Characteristics

Hydraulic Fluid: Viscosity 35 mm²/s, Specific Gravity 0.850



Model Numbers	Graphic Symbols	Graphic Symbols
MBP-03		
MBA-03		
MBB-03		
MBW-03		



MBW-03

Pressure Adj. Screw
14 Hex. Soc.
INC. Mounting Surface

Mounting Surface
(O-Rings Furnished)

Approx. Mass.....4.0kg

MBP-03, MBA-03

MBP FullyExtended 209
MBA FullyExtended 207

Approx. Mass.....3.4 kg

For other dimensions, refer to (MBW-03) in the drawing left.

MBB-03

FullyExtended 207

Approx. Mass.....3.4 kg

For other dimensions, refer to (MBW-03) in the drawing left.

List of Seals

MBP-03
MBA-03
MBB-03
MBW-03

MBP-03
MBA-03

- MBP-03: The pressure adjustment part is assembled on the right side.
- MBW-03: The pressure adjustment part is assembled on the both sides.

F
03 Series Modular Valves

Item	Name of Parts	Part Numbers	Qty.			
			MBP-03	MBA-03	MBB-03	MBW-03
1	O-Ring	AS568-014 (NBR-90)	5	5	5	5
2	O-Ring	OR NBR-70-1 P6-N	1	1	1	2
3	O-Ring	OR NBR-90 P16-N	1	1	1	2
4	O-Ring	OR NBR-90 P26-N	1	1	1	2