

Relief Modular Valves

Specifications

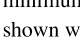
Model Numbers	Max. Operating Pressure MPa	Max. Flow L/min
MB*-01-**-70	35	60

Model Number Designation

MBP	-01	-B	-B	-70
Series Number	Valve Size	Pres. Adj. Range MPa	Pres. Adj. Screw Position	Design Number
MBP: Relief Valve for P-Line	01	B: ★-7 C: 3.5-14 H: 7-21 K: 14-35	None: A Port Side B: B Port Side	70
MBA: Relief Valve for A-Line			—	
MBB: Relief Valve for B-Line			—	

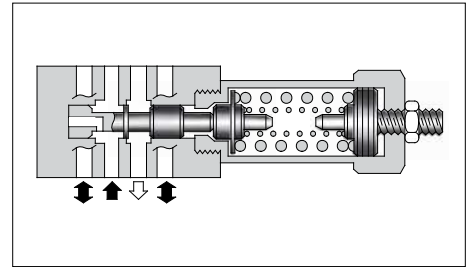
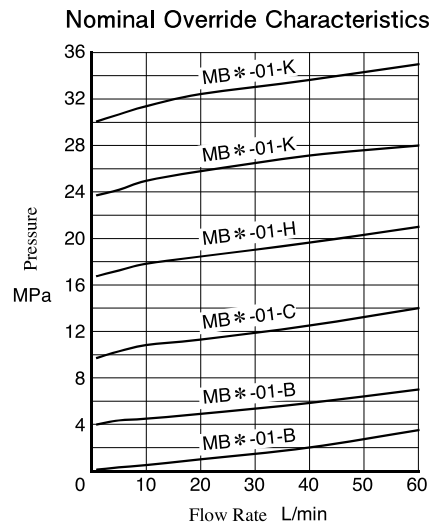
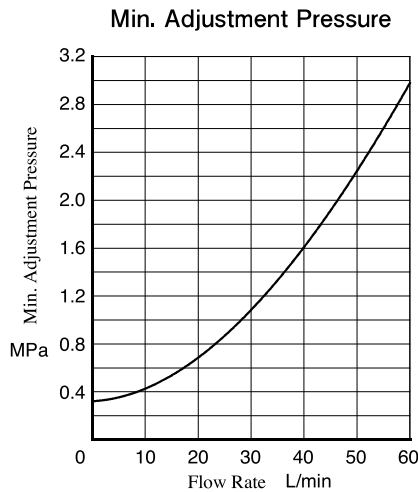
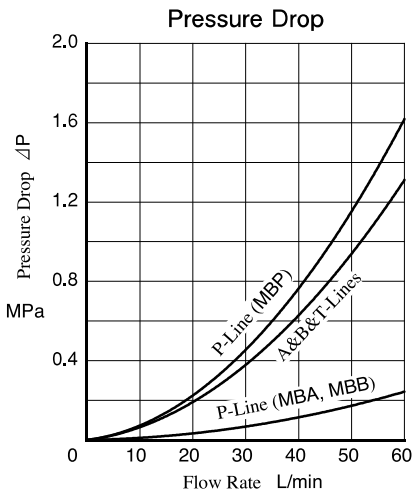
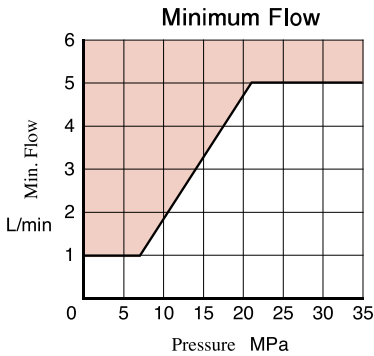
★See the "Min. Adjustment Pressure" of this page.

Instructions

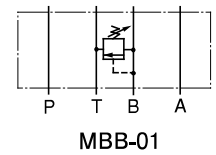
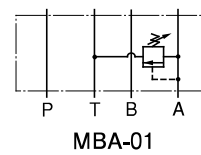
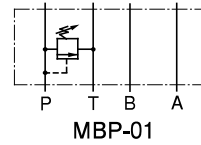
- The minimum adjustment pressure equals the value obtained from the minimum adjustment pressure characteristics plus the tank line back pressure of this page. This back pressure should include the value of the T-line pressure drop characteristics of the valves stacked to the base plate side of the modular valve.
- To make pressure adjustment, loosen the lock nut and turn the pressure adjustment screw clockwise or anti-clockwise. For an increase of pressure, turn the screw clockwise. Be sure to re-tighten the lock nut firmly after making adjustment to the pressure.
- In case of a small flow, the setting pressure may become unstable. To avoid this, refer to the minimum flow characteristic curve of the next page and use the valve within a range as shown with .

Typical Performance Characteristics

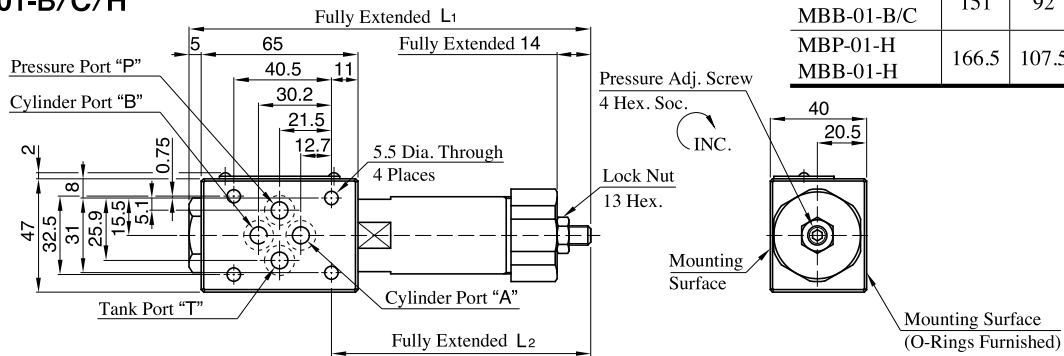
Hydraulic Fluid: Viscosity 35 mm²/s, Specific Gravity 0.850



Graphic Symbols

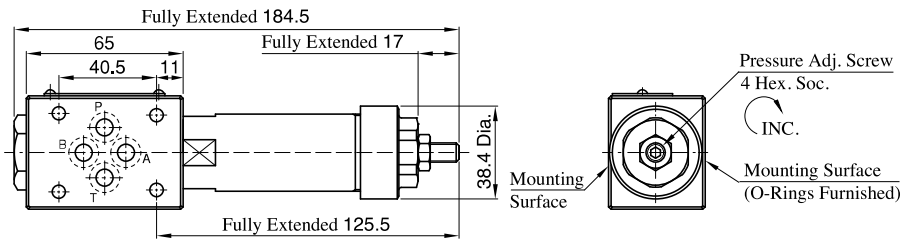


MBP-01-B/C/H MBB-01-B/C/H



Model Numbers	L1	L2	Mass kg
MBP-01-B/C MBB-01-B/C	151	92	1.15
MBP-01-H MBB-01-H	166.5	107.5	1.25

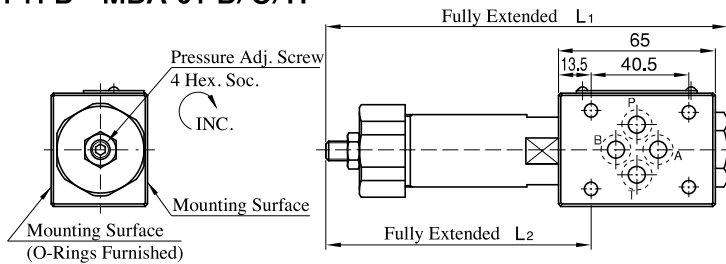
MBP-01-K MBB-01-K



Approx. Mass.....1.35 kg

● For other dimensions, refer to the drawing above (MBP-01-B/C/H).

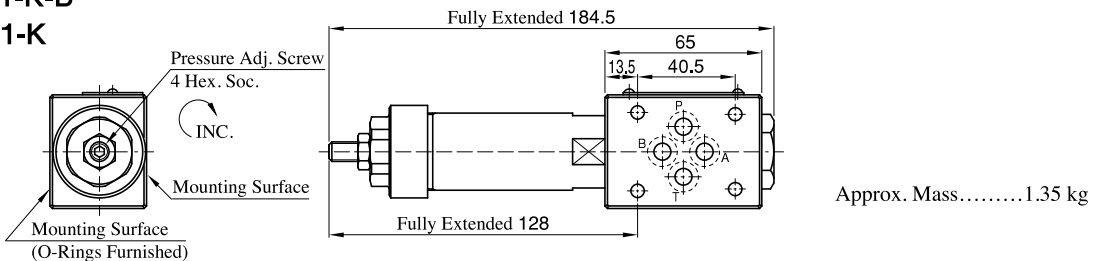
MBP-01-B-B • MBP-01-C-B MBP-01-H-B • MBA-01-B/C/H



Model Numbers	L1	L2	Mass kg
MBP-01-B-B MBP-01-C-B	151	94.5	1.15
MBP-01-H-B MBA-01-H	166.5	110	1.25

● For other dimensions, refer to the drawing above (MBP-01-B/C/H).

MBP-01-K-B MBA-01-K

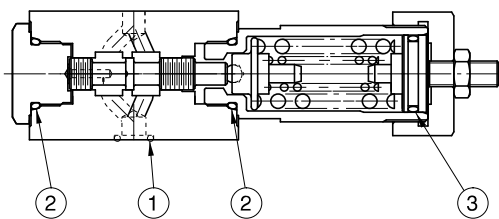


Approx. Mass.....1.35 kg

● For other dimensions, refer to the drawing above (MBP-01-B/C/H).

List of Seals

MBP-01 MBA-01 MBB-01



Item	Name of Parts	Part Numbers	Qty.
1	O-Ring	OR NBR-90 P9-N	4
2	O-Ring	OR NBR-90 P18-N	2
3	O-Ring	OR NBR-70-1 P20-N (MB * -01-B/C/H(-B)) OR NBR-70-1 P22-N (MB * -01-K(-B))	1

● MBP/MBB-01- * -B, MBA-01

The pressure adjustment part is assembled on the left side.