

End Plates

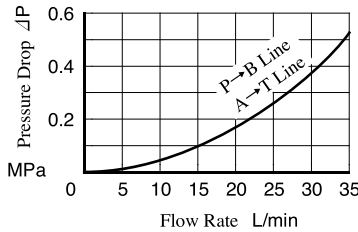
Blocking plates are used for auxiliary mounting surface or for closing unnecessary circuits.
 Bypass plates are used for unidirectional circuits that require no solenoid operated directional valves.

Model Number Designation

MDC	-01	-A	-30
Series Number	Plate Size	Type of Plate	Design Number
MDC: End Plate	01	A: Blocking Plate B: Bypass Plate	30

Typical Performance Characteristics

Hydraulic Fluid: Viscosity 35 mm²/s, Specific Gravity 0.850



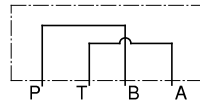
Specifications

Model Numbers	Max. Operating Pressure MPa	Max. Flow L/min
MDC-01-*-30	31.5	35

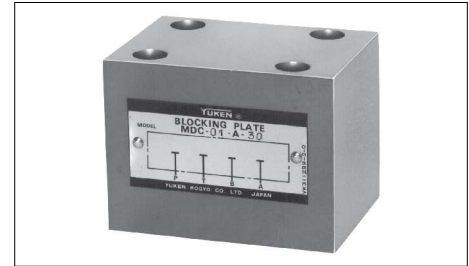
Graphic Symbols



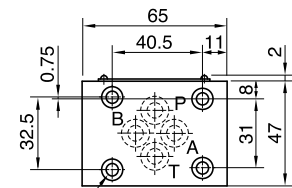
MDC-01-A



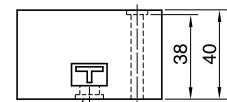
MDC-01-B



MDC-01



5.5 Dia. Through
9.5 Spotface 4 Places



O-Ring for Port
(OR NBR-90 P9-N...4 Pcs.)

Approx. Mass.....1 kg

Connecting Plates

These plates are used for detecting pressure of each line.

Model Number Designation

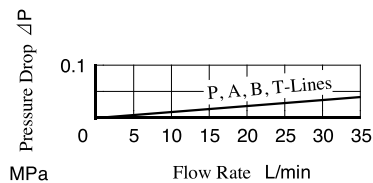
MDS	-01	-PA	-30
Series Number	Plate Size	Type of Detecting Line	Design Number
MDS: Connecting Plate	01	PA: P&A-Lines PB: P&B-Lines AT: A&T-Lines	30

Specifications

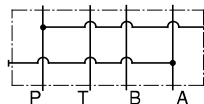
Model Numbers	Max. Operating Pressure MPa	Max. Flow L/min
MDS-01-*-30	31.5	35

Pressure Drop

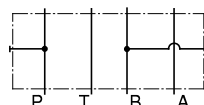
Hydraulic Fluid: Viscosity 35 mm²/s, Specific Gravity 0.850



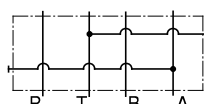
Graphic Symbols



MDS-01-PA



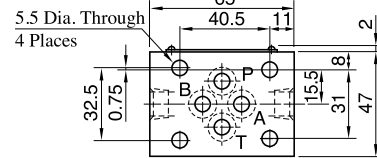
MDS-01-PB



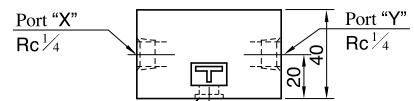
MDS-01-AT



MDS-01



5.5 Dia. Through
4 Places



O-Ring for Port
(OR NBR-90 P9-N: 4 Pcs.)

Approx. Mass.....0.8 kg

Model Numbers	Pressure Detecting Line	
	Port "X"	Port "Y"
MDS-01-PA	P-Line	A-Line
MDS-01-PB	B-Line	P-Line
MDS-01-AT	T-Line	A-Line