

Sequence Modular Valves/Counterbalance Modular Valves

Specifications

Model Numbers	Max. Operating Pressure MPa	Max. Flow L/min
MHP-01- *- *-70	35	60
MHA/MHB-01- *-70		

Model Number Designation

MHP	-01	-B	-B	-70
Series Number	Valve Size	Pres. Adj. Range MPa	Pres. Adj. Screw Position	Design Number
MHP: Sequence Valve for P-Line	01	B: ★-7 C: 3.5-14 H: 7-21 K: 14-35	None: A Port Side	70
MHA: Counterbalance Valve for A-Line			B: B Port Side	
MHB: Counterbalance Valve for B-Line			—	

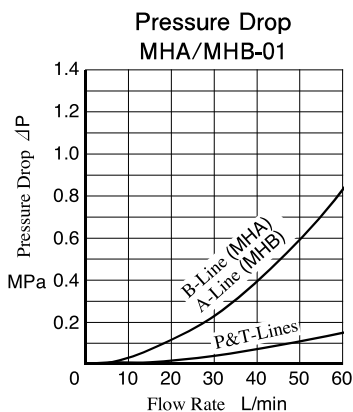
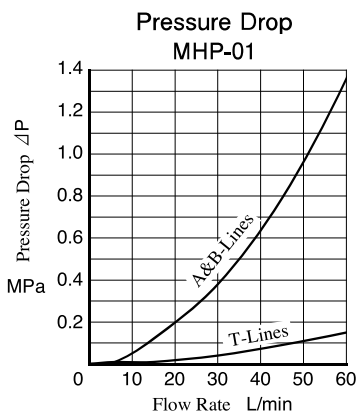
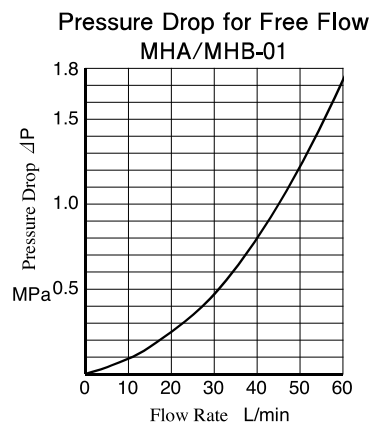
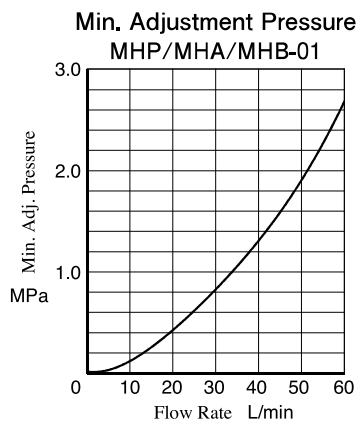
★ See the "Min. Adjustment Pressure" on this page.

Instructions

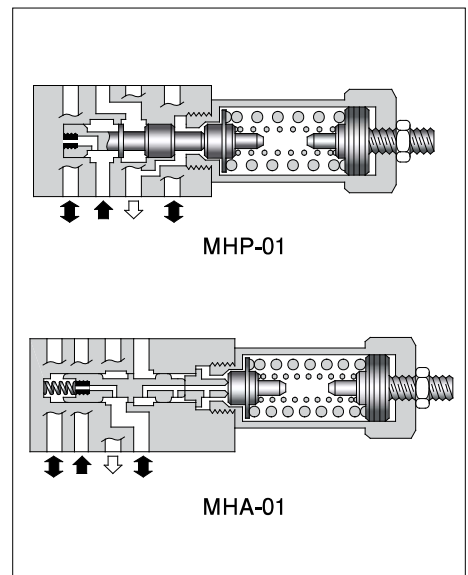
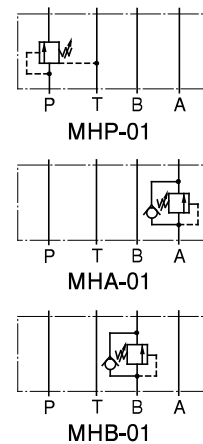
- The minimum adjustment pressure for MHP-01 equals the value obtained from the minimum adjustment pressure characteristics plus the tank line back pressure. This back pressure should include the value of the T-Line pressure drop characteristics of the valves stacked.
- The minimum adjustment pressure for MHA-01 and MHP-01 equals the value obtained from the minimum adjustment pressure characteristics plus the outlet-side back pressure of the valve. The outlet-side back pressure should include the values of the A(B)-Line pressure drop.
- To make pressure adjustment, loosen the lock nut and turn the pressure adjustment screw clockwise or anti-clockwise. For increasing pressure, turn the screw clockwise. Be sure to re-tighten the lock nut firmly after making adjustment to the pressure.

Typical Performance Characteristics

Hydraulic Fluid: Viscosity 35 mm²/s, Specific Gravity: 0.850

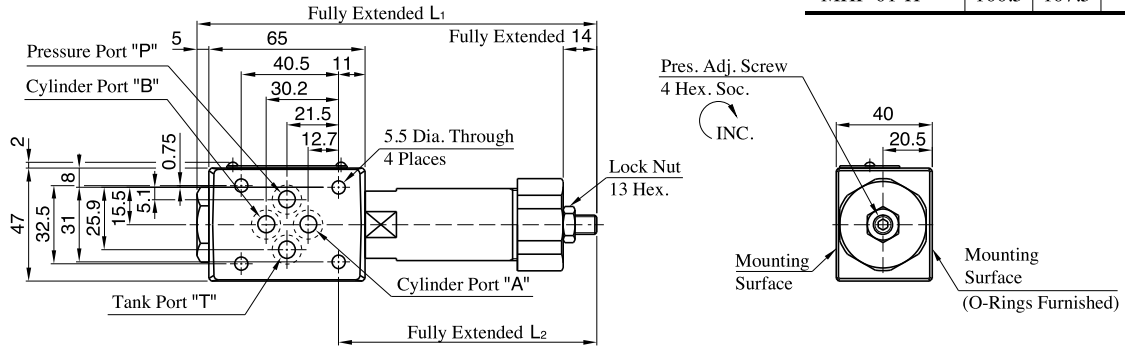


Graphic Symbols

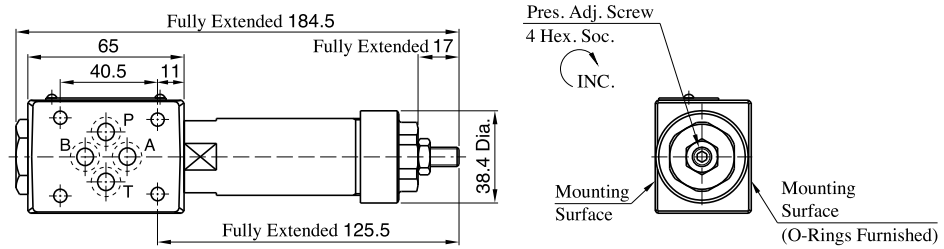


MHP-01-B/C/H

Model Numbers	L ₁	L ₂	Mass kg
MHP-01-B/C	151	92	1.45
MHP-01-H	166.5	107.5	1.55



MHP-01-K

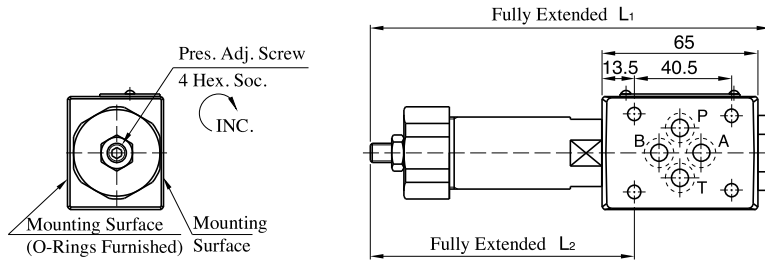


● For other dimensions, refer to "MHP-01-B/C/H" in the above figure.

Approx. Mass.....1.65 kg

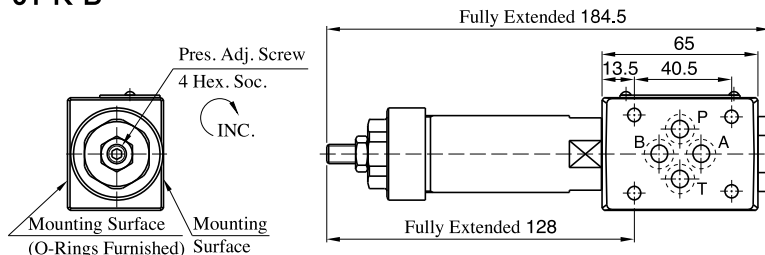
MHP-01-B-B
MHP-01-C-B
MHP-01-H-B

Model Numbers	L ₁	L ₂	Mass kg
MHP-01-B-B	151	94.5	1.45
MHP-01-C-B	166.5	110	1.55



● For other dimensions, refer to "MHP-01-B/C/H" drawing above.

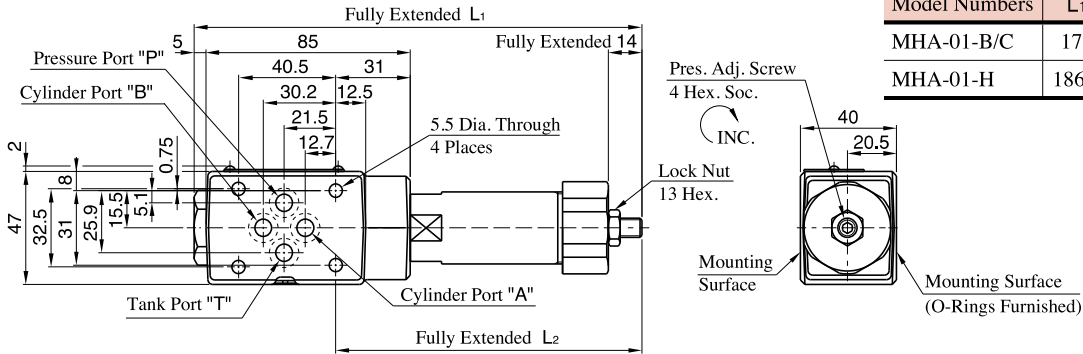
MHP-01-K-B



● For other dimensions, refer to "MHP-01-K" in the above figure.

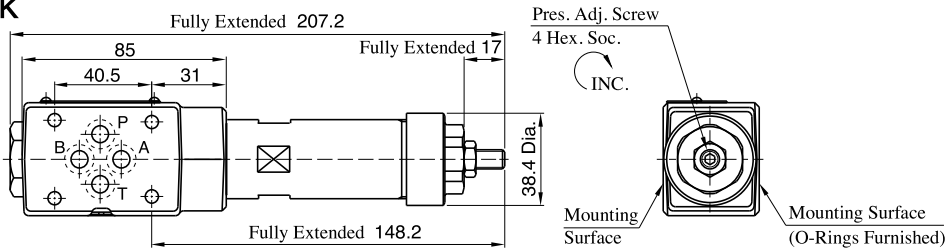
Approx. Mass.....1.65 kg

MHA-01-B/C/H



Model Numbers	L ₁	L ₂	Mass kg
MHA-01-B/C	171	112	1.65
MHA-01-H	186.5	127.5	1.75

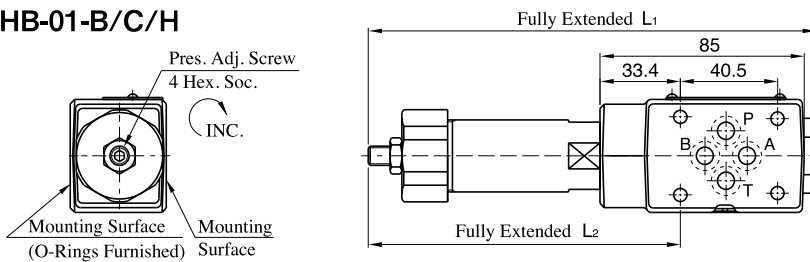
MHA-01-K



● For other dimensions, refer to "MHA-01-B/C/H" in the above figure.

Approx. Mass.....1.85 kg

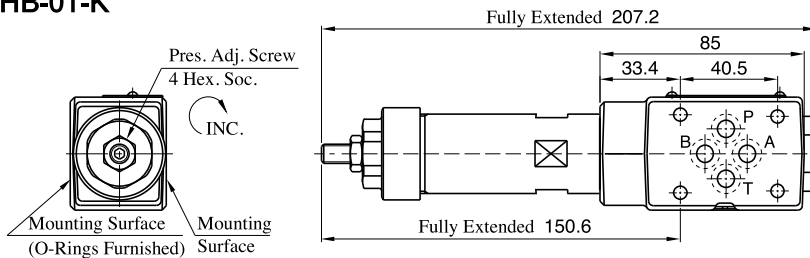
MHB-01-B/C/H



Model Numbers	L ₁	L ₂	Mass kg
MHB-01-B/C	171	114.4	1.65
MHB-01-H	186.5	129.9	1.75

● For other dimensions, refer to "MHA-01-B/C/H" in the above figure.

MHB-01-K

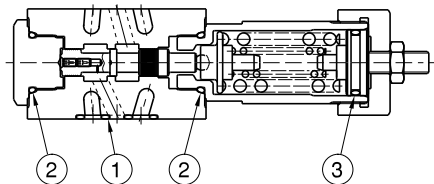


● For other dimensions, refer to "MHA-01-K" in the above figure.

Approx. Mass.....1.85 kg

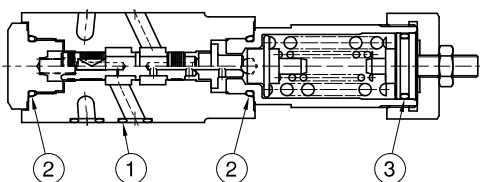
List of Seals

MHP-01

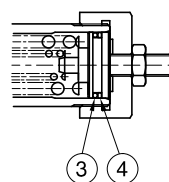


● MHP-01 - * - B has the pressure adjustment part on the left side.

MHA-01



MHA-01-K



● MHB-01 has the pressure adjustment part on the left side.

Item	Name of Parts	Part Numbers	Qty.
1	O-Ring	OR NBR-90 P9-N	4
2	O-Ring	OR NBR-90 P18-N	2
3	O-Ring	OR NBR-70-1 P20-N [MHP-01-B/C/H] OR NBR-70-1 P22-N [MHP-01-K]	1

Item	Name of Parts	Part Numbers	Qty.
1	O-Ring	OR NBR-90 P9-N	4
2	O-Ring	OR NBR-90 P18-N	2
3	O-Ring	OR NBR-90 P20-N [MHA-01-B/C/H] [MHB-01-B/C/H] OR NBR-90 P22-N [MHA-01-K] [MHB-01-K]	1
4	Back-up Ring	BR JIS B 2401-4-T2-P22 [MHA-01-K] [MHB-01-K]	1