

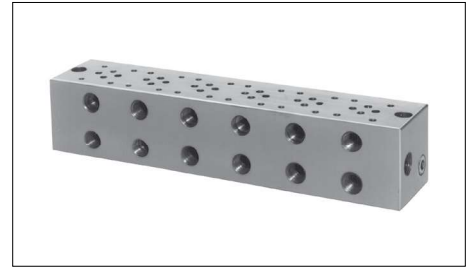
# Base Plates For Modular Valves

## Specifications

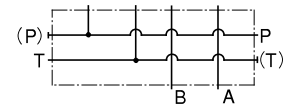
Max. Operating Pressure.....25 MPa

## Model Number Designation

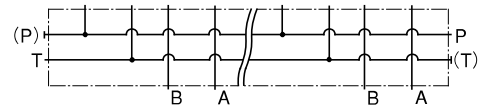
MMC	-01	-6	-40
Series Number	Plate Size	Number of Stations	Design Number
MMC: Base Plate	01	1: 1 Station 2: 2 Stations 3: 3 Stations 4: 4 Stations 5: 5 Stations 6: 6 Stations 7: 7 Stations 8: 8 Stations 9: 9 Stations 10: 10 Stations	40



Graphic Symbols



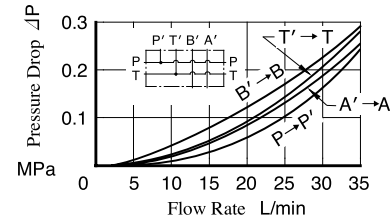
MMC-01-1



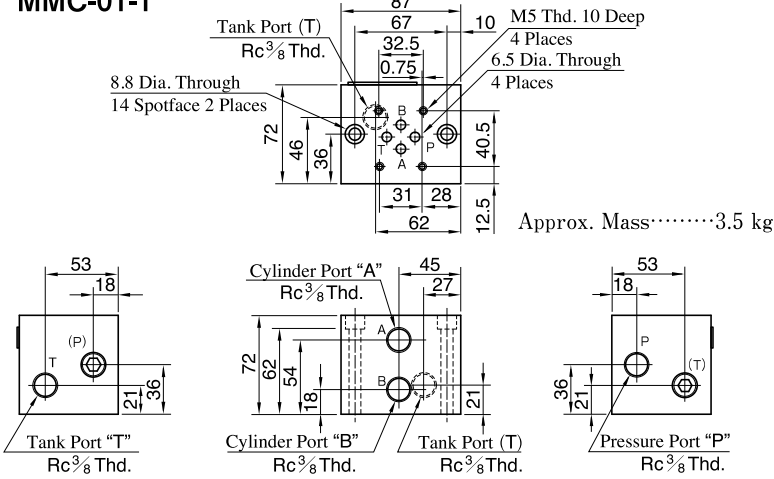
MMC-01-2~10

## Pressure Drop

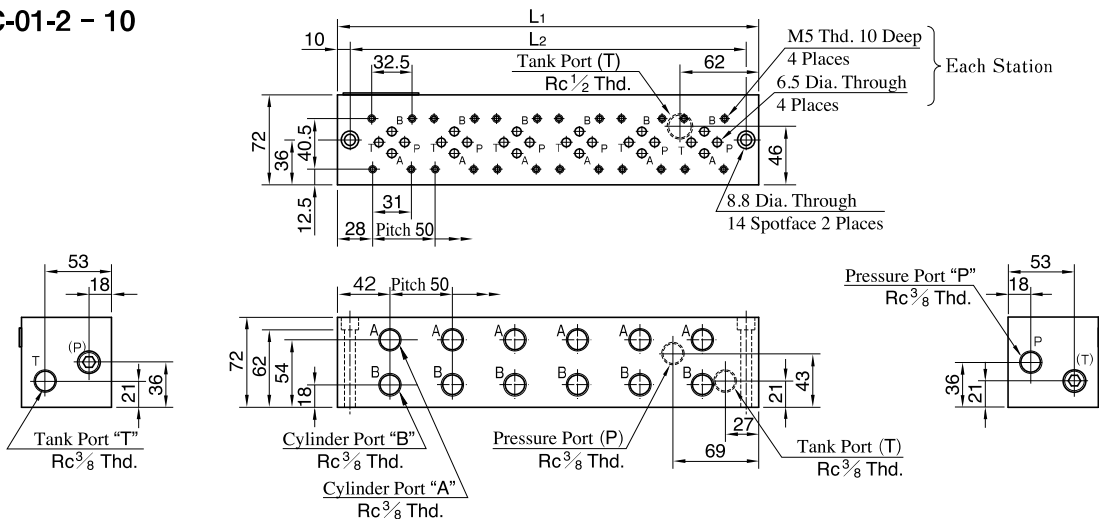
Hydraulic Fluid: Viscosity 35 mm<sup>2</sup>/s,  
Specific Gravity 0.850



### MMC-01-1



### MMC-01-2 - 10



Model Numbers	L1	L2	Mass kg
MMC-01-2	137	117	5.5
MMC-01-3	187	167	7.0
MMC-01-4	237	217	8.5
MMC-01-5	287	267	10.0
MMC-01-6	337	317	11.5

Model Numbers	L1	L2	Mass kg
MMC-01- 7	387	367	13.0
MMC-01- 8	437	417	14.5
MMC-01- 9	487	467	16.0
MMC-01-10	537	517	17.5

01 Series Modular Valves

**■ Instructions**

- Port Used: Base plate has three (two, in case of 1 station type) pressure port "P"s and four tank port "T"s. Any one of these ports or two or more ports may be used. However, please note that the ports marked with (P) or (T) in the drawing are normally plugged. Remove the plugs when using such ports. Make sure that ports that are not currently used are properly plugged.

**■ Interface Mounting Surface Dimensions for 01 Series Modular Valve**

When standard base plates (MMC-01) are not used, the mounting surface described below must be prepared. The mounting surface should have a good machined finish. ( $\sqrt{Ra}$ )

