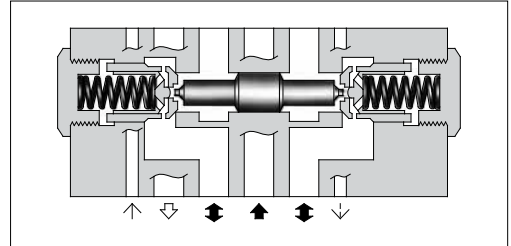


## Pilot Operated Check Modular Valves

### Specifications

Model Numbers	Max. Operating Pressure MPa (PSI)	Max. Flow L/min (U.S.GPM)
MPA-06*-**-30/3090 MPB-06*-**-30/3090 MPW-06*-30/3090	25 (3630)	500 (132)



### Model Number Designation

F-	MPA	-06	S	-2	-X	-30	*
Special Seals	Series Number	Valve Size	Port Tapping Feature of Pilot-Drain Port <sup>★1</sup>	Cracking Pressure MPa (PSI)	Pilot-Drain <sup>★2</sup> Connection	Design Number	Design Standard
<b>F:</b> Special Seals for Phosphate Ester Type Fluids (Omit if not required)	<b>MPA :</b> Pilot Operated Check Valve for A-Line <b>MPB :</b> Pilot Operated Check Valve for B-Line <b>MPW :</b> Pilot Operated Check Valve for A&B-Lines	<b>06</b>	<b>None :</b> Taper Thread <b>S :</b> Straight Thread (Applicable only for Japanese Std. "JIS")	<b>2 :</b> 0.2 (29) <b>4 :</b> 0.4 (58)	<b>None:</b> Internal Pilot-Internal Drain <b>X :</b> External Pilot-External Drain <b>Y :</b> External Pilot-Internal Drain	<b>30</b>	Refer to <sup>★3</sup>

★1. This item applies only to External Pilot or External Drain Type.

★2. Only "None: Internal Pilot-Internal Drain Type" is available for MPW (for "A&B-Lines").

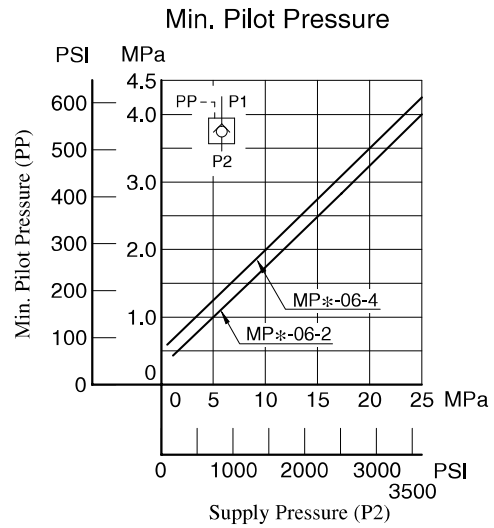
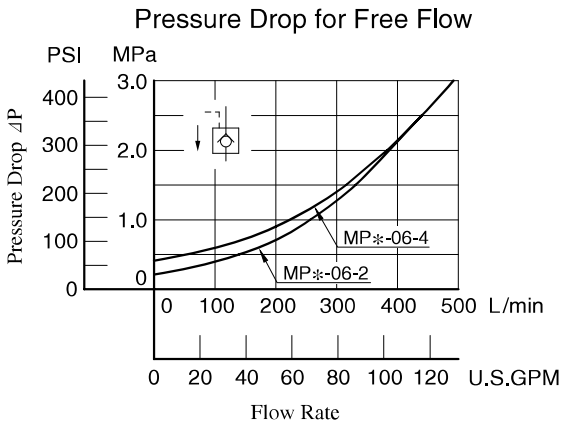
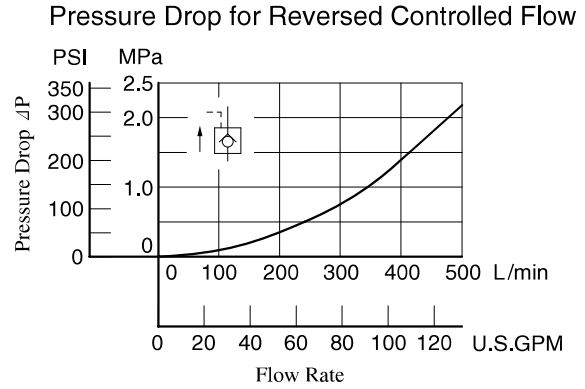
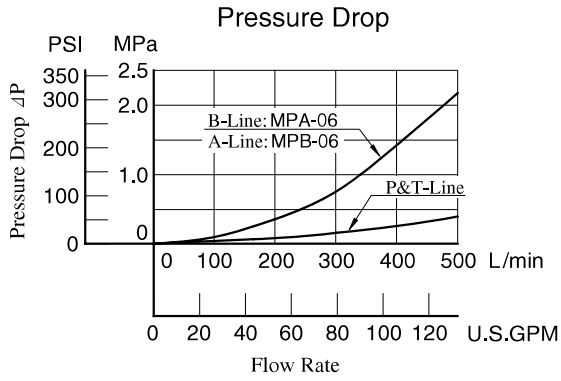
★3. Design Standards: None ..... Japanese Standard "JIS" and European Design Standard 90 ..... N. American Design Standard

### Graphic Symbols

Pilot-Drain type Model No.	Internal pilot- Internal drain type	Exnternal pilot- External drain type	External pilot- Internal drain type
MPA-06	 MPA-06-*	 MPA-06*-*-X	 MPA-06*-*-Y
MPB-06	 MPB-06-*	 MPB-06*-*-X	 MPB-06*-*-Y
MPW-06	 MPW-06-*	—	—

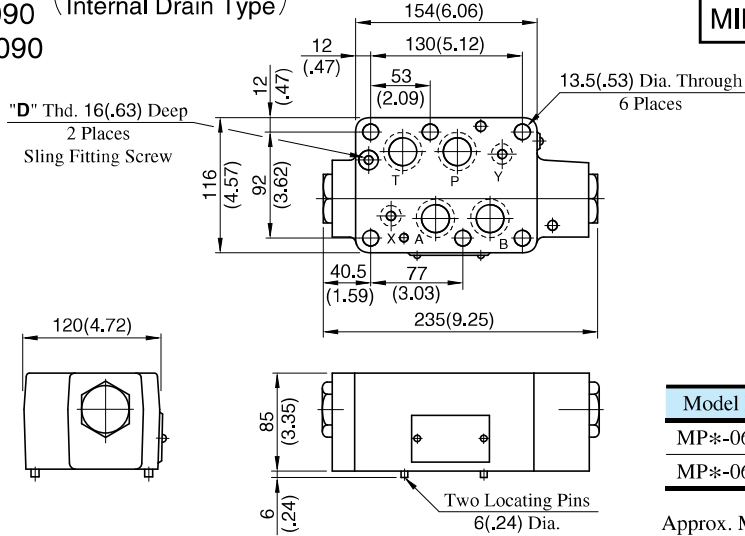
## Typical Performance Characteristics

Hydraulic Fluid: Viscosity 35 mm<sup>2</sup>/s (164 SSU), Specific Gravity 0.850



MPA-06-\*-30/3090 (Internal Pilot-Internal Drain Type)  
 MPB-06-\*-30/3090 (Internal Drain Type)  
 MPW-06-\*-30/3090

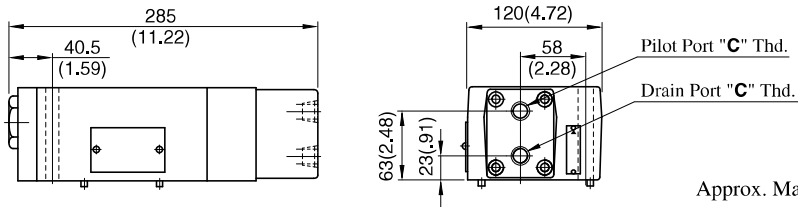
**DIMENSIONS IN MILLIMETRES (INCHES)**



Model Numbers	"D" Thd.
MP*-06-*-30	M8
MP*-06-*-3090	5/16-18 UNC

Approx. Mass..... 11.6 kg (25.6 lbs.)

MPA-06-\*-X-30/3090 (External Pilot-External Drain Type)

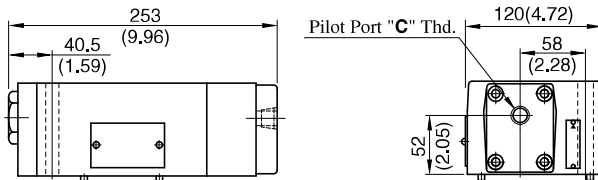


Approx. Mass..... 13 kg (28.7 lbs.)

Model Numbers	Thread Size "C" Thd.
MPA-06-*-X-30	Rc 3/8 = 3/8 BSP. Tr
MPA-06-*-X-3090	3/8 NPT
MPA-06S-*-X-30	G 3/8

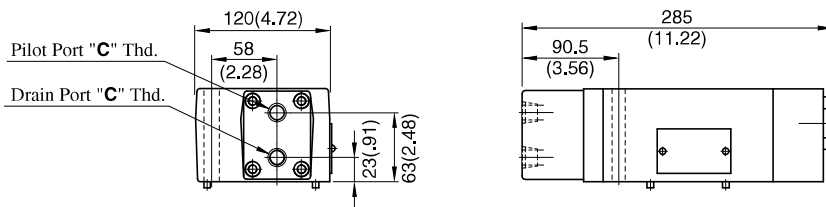
Approx. Mass..... 11.6 kg (25.6 lbs.)

MPA-06-\*-Y-30/3090 (External Pilot-Internal Drain Type)



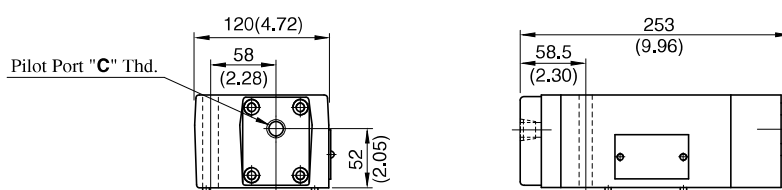
• For other dimensions, refer to "Internal pilot-Internal drain type" drawing above.

MPB-06-\*-X-30/3090 (External Pilot-External Drain Type)



Approx. Mass..... 13 kg (28.7 lbs.)

MPB-06-\*-Y-30/3090 (External Pilot-Internal Drain Type)

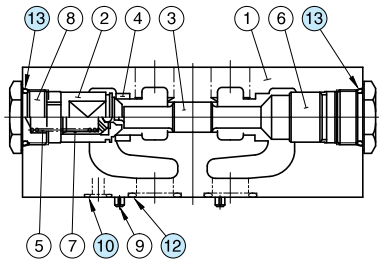


Approx. Mass..... 11.6 kg (25.6 lbs.)

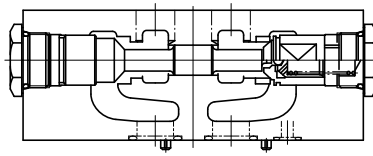
• For other dimensions, refer to "Internal pilot-Internal drain type" drawing above.

## Spare Parts List

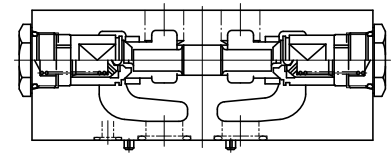
### Internal Pilot- Internal Drain Type



MPA-06\*-30/3090

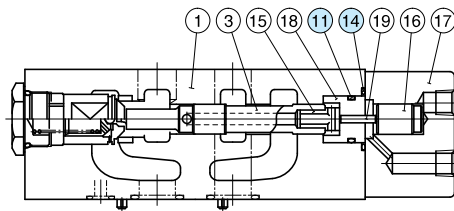


MPB-06\*-30/3090

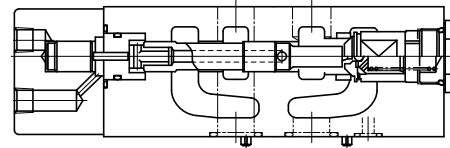


MPW-06\*-30/3090

### External Pilot- External Drain Type

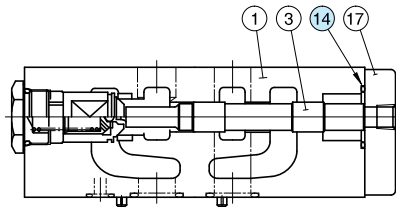


MPA-06\*-X-30/3090

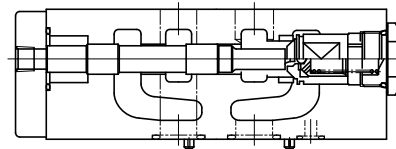


MPB-06\*-X-30/3090

### External Pilot- Internal Drain Type



MPA-06\*-Y-30/3090



MPB-06\*-Y-30/3090

### List of Seals

Item	Name of Parts	Part Numbers	Quantity		
			Internal Pilot- Internal Drain	External Pilot- External Drain	External Pilot- Internal Drain
10	O-Ring	SO-NB-P14	2	2	2
11	O-Ring	SO-NA-P26	—	1	—
12	O-Ring	SO-NB-P28	4	4	4
13	O-Ring	SO-NB-P32	2	1	1
14	O-Ring	SO-NB-P36	—	1	1

Note: When ordering seals, please specify the seal kit number from the table right.

### List of Seal Kits

Valve Model Numbers	Seal Kit Numbers
MPA-06-*	KS-MPA-06-10
MPB-06-*	
MPW-06-*	
MPA-06*-X	KS-MPA-06-X-10
MPB-06*-X	
MPA-06*-Y	KS-MPA-06-Y-10
MPB-06*-Y	