

Reducing Modular Valves

Specifications

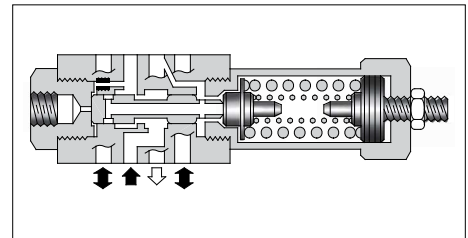
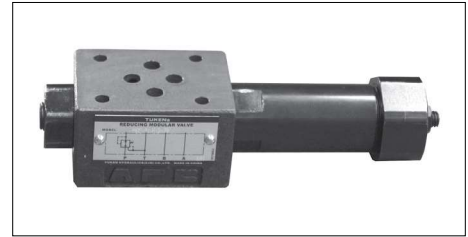
Model Numbers	Max. Operating Pressure MPa	Max. Flow L/min
MR*-01-*-*-70	35	60*

★ If the pressure is set below 0.5 MPa, the maximum flow is limited. See the "Min. Adjustment Pressure vs. Max. Flow" of this page and during use, stay within the shaded zone on the graph.

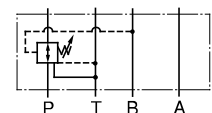
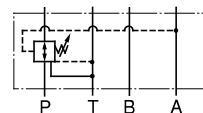
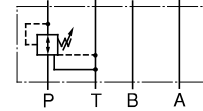
Model Number Designation

MRP	-01	-A	-B	-70
Series Number	Valve Size	Pres. Adj. Range MPa	Pres. Adj. Screw Position	Design Number
MRP: Reducing Valve for P-Line	01	A: ★-3.5	None: A Port Side B: B Port Side	70
MRA: Reducing Valve for A-Line		B: 0.8-7		
MRB: Reducing Valve for B-Line		C: 3.5-14 H: 7-21		

★ See the "Min. Adjustment Pressure vs. Max. Flow" of this page.



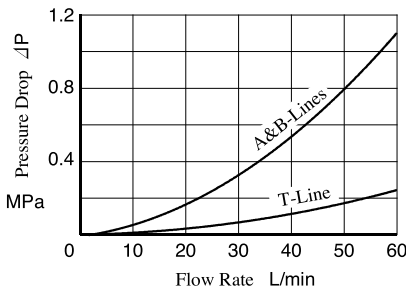
Graphic Symbols



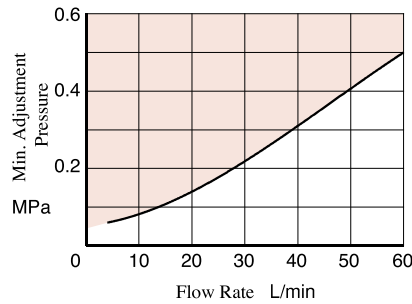
Typical Performance Characteristics

Hydraulic Fluid: Viscosity 35 mm²/s, Specific Gravity 0.850

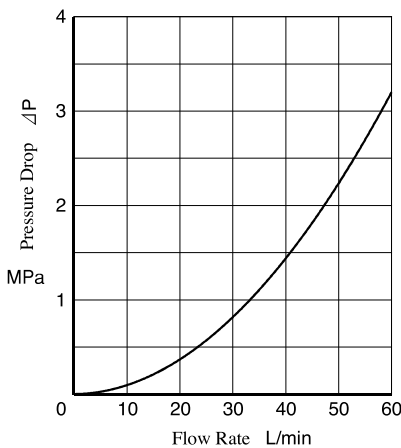
Pressure Drop



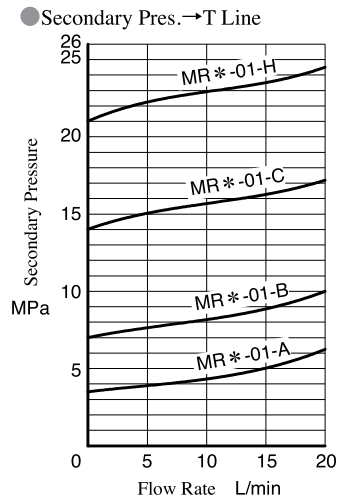
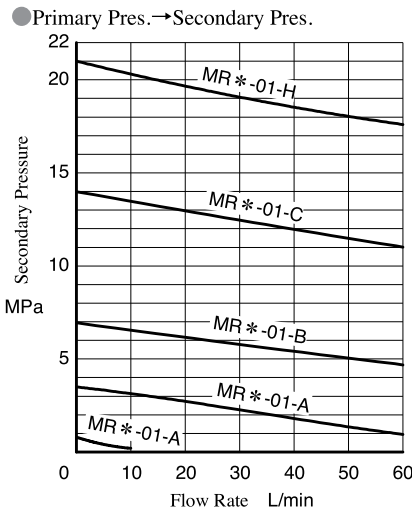
Min. Adjustment Pressure vs. Max. Flow



Pres. Drop at Spool Fully Open (P-Line)



Nominal Override Characteristics Primary Pressure 35 MPa

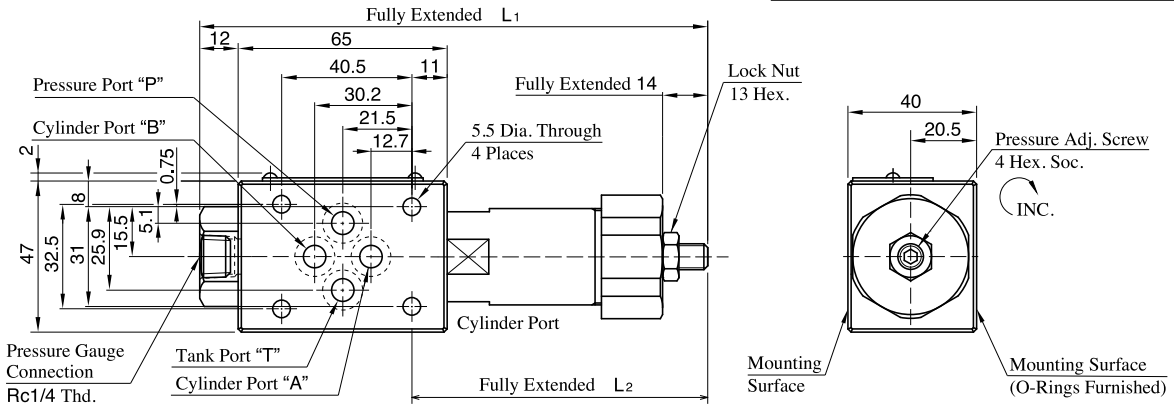


Instructions

- The minimum adjustment pressure equals the value obtained from the minimum adjustment pressure characteristics plus the tank line back pressure. This back pressure should include the value of the T-line pressure drop characteristics of the valves stacked to the base plate side of the modular valve.
- To make pressure adjustment, loosen the lock nut and turn the pressure adjustment screw clockwise or anti-clockwise. For an increase of pressure, turn the screw clockwise. Be sure to re-tighten the lock nut firmly after making adjustment to the pressure.

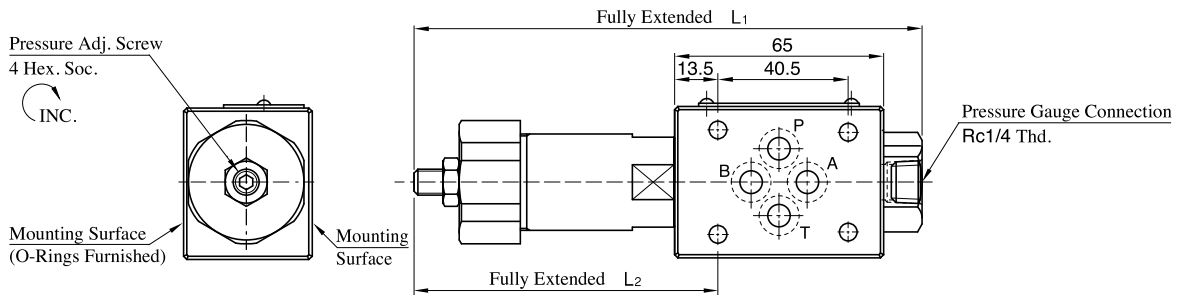
MRP-01
MRA-01
MRB-01

Model Numbers	L1	L2	Mass kg
MR *-01-A	162.5	96.5	1.10
MR *-01-B/C	158	92	1.15
MR *-01-H	173.5	107.5	1.25



MRP-01-* -B
MRA-01-* -B
MRB-01-* -B

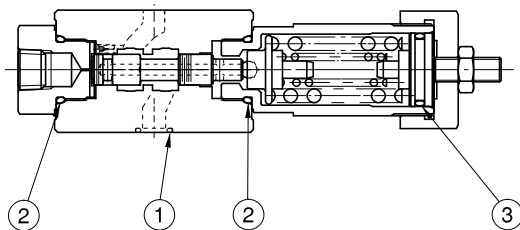
Model Numbers	L1	L2	Mass kg
MR *-01-A-B	162.5	99	1.10
MR *-01-B-B	158	94.5	1.15
MR *-01-C-B			
MR *-01-H-B	173.5	110	1.25



● For other dimensions, please refer to "MRP/MRA/MRB-01" in the above figure.

List of Seals

MRP-01
MRA-01
MRB-01



Item	Name of Parts	Part Numbers	Qty.
1	O-Ring	OR NBR-90 P9-N	4
2	O-Ring	OR NBR-90 P18-N	2
3	O-Ring	OR NBR-70-1 P20-N	1

- MR *-01-* -B
The pressure adjustment part is assembled on the left side.

01 Series Modular Valves