

Throttle Modular Valves

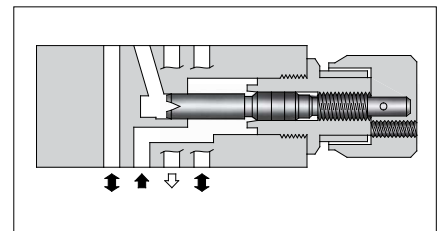
Specifications

Model Numbers	Max. Operating Pressure MPa	Max. Flow L/min
MS *-01-50	31.5	60 *

★At the low differential pressure, maximum flow is limited. See "Pressure Drop at Throttle Fully Open".

Model Number Designation

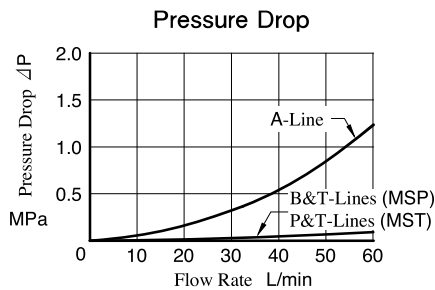
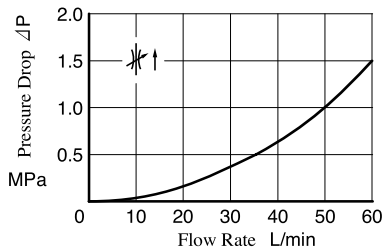
MSP	-01	-50
Series Number	Valve Size	Design Number
MSP: for P-Line } Throttle Valve MST: for T-Line }	01	50



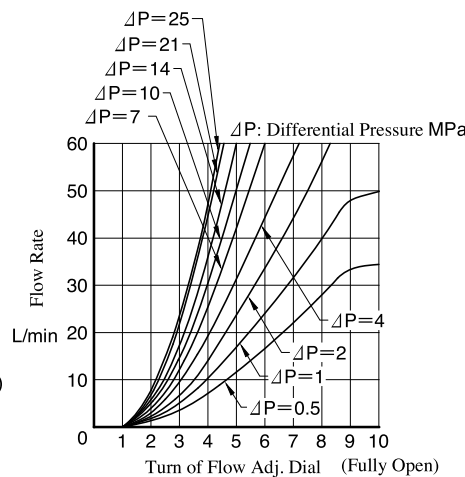
Typical Performance Characteristics

Hydraulic Fluid: Viscosity 35 mm²/s, Specific Gravity 0.850

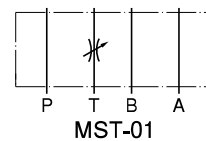
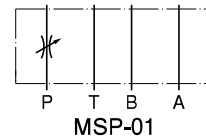
Pressure Drop at Throttle Fully Open



Metered Flow vs. Dial Position



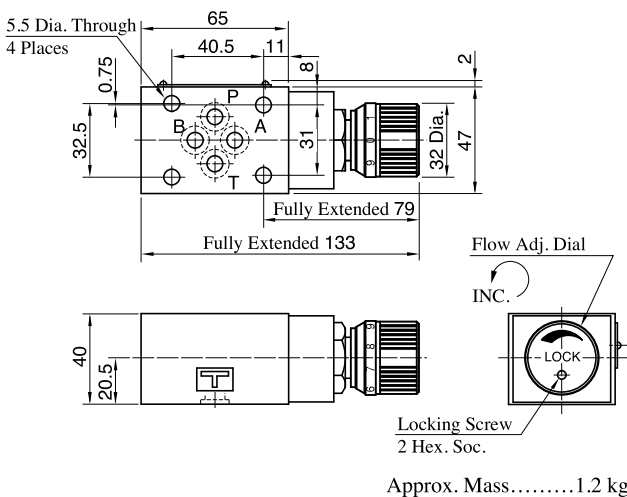
Graphic Symbols



Instructions

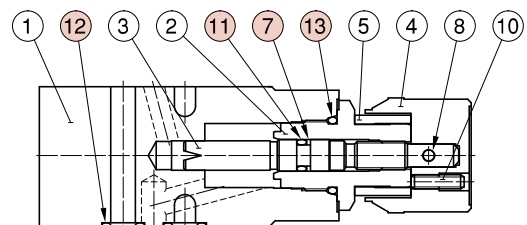
- To make flow rate adjustment, loosen locking screw for the dial and turn the flow adjustment dial clockwise or anti-clockwise. For a decrease of flow, turn the dial clockwise. Be sure to re-tighten the locking screw firmly after the adjustment of the flow rate.

MSP-01 MST-01



List of Seals

MSP-01 MST-01



Item	Name of Parts	Part Numbers	Qty.
7	Back-up Ring	BR JIS B 2401-4-T2-P6	1
11	O-Ring	OR NBR-70-1 P6-N	1
12	O-Ring	OR NBR-90 P9-N	4
13	O-Ring	OR NBR-90 P18-N	1

F
01 Series Modular Valves