

Throttle Modular Valves

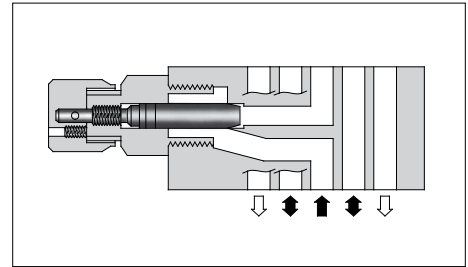
Specifications

Model Numbers	Max. Operating Pressure MPa	Max. Flow L/min
MSP-03-30	25	70 *

★ Maximum flow decreases when the differential pressure is less than 1 MPa. See the "Pressure Drop at Throttle Fully Open" of this page.

Model Number Designation

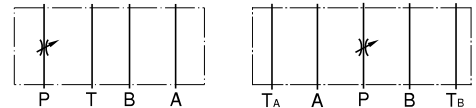
MSP	-03	-30
Series Number	Valve Size	Design Number
MSP: Throttle Valve for P-Line	03	30



Instructions

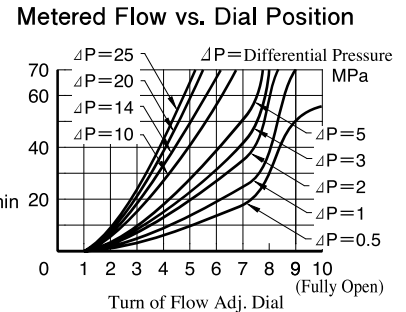
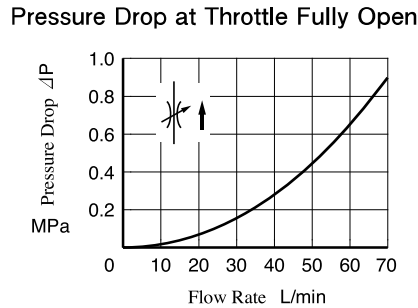
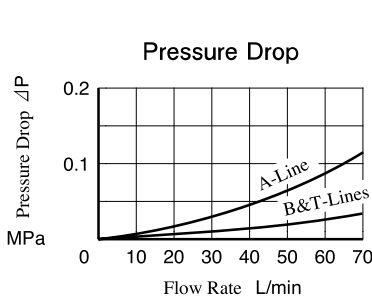
- To make flow adjustment, loosen locking screw for the dial and turn the flow adjustment dial clockwise or anti-clockwise. Be sure to re-tighten the locking screw firmly after the adjustment of the flow rate.

Graphic Symbols



Typical Performance Characteristics

Hydraulic Fluid: Viscosity 35 mm²/s, Specific Gravity 0.850



MSP-03

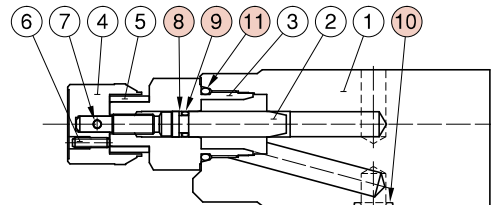
Flow Adj. Dial
Inc.

Locking Screw
2 Hex. Soc.

Approx. Mass.....3.0 kg

List of Seals

MSP-03



Item	Name of Parts	Part Numbers	Qty.
8	Back-up Ring	900-VK411915-2	1
9	O-Ring	OR NBR-70-1 P7-N	1
10	O-Ring	AS568-014 (NBR-90)	5
11	O-Ring	OR NBR-90 P24-N	1