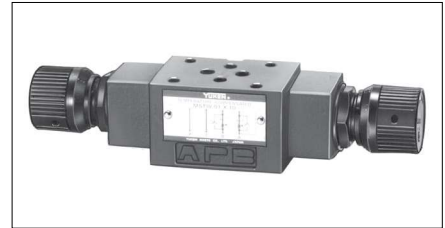


Temperature Compensated Throttle and Check Modular Valves

Specifications

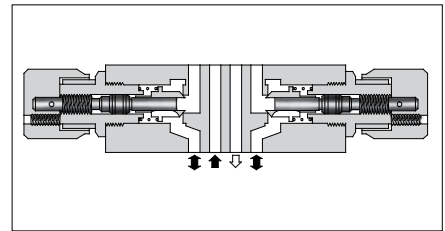
Model Numbers	Max. Operating Pressure MPa	Max. Differential Pressure MPa	Max. Metered Flow L/min	Min. Metered Flow L/min	Max. Free Flow L/min
MST*-01-X-10	31.5	14	35	0.5	35



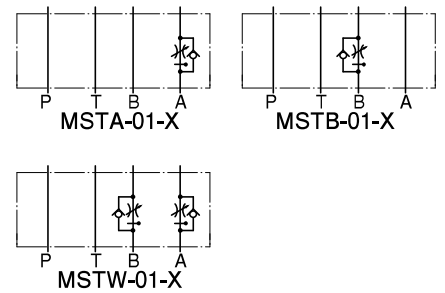
Model Number Designation

MSTA	-01	-X	-10
Series Number	Valve Size	Direction of Flow	Design Number
MSTA: for A-Line MSTB: for B-Line MSTW: for A&B-Lines	01	X: Meter-out	10

Temperature Compensated Throttle and Check Valve

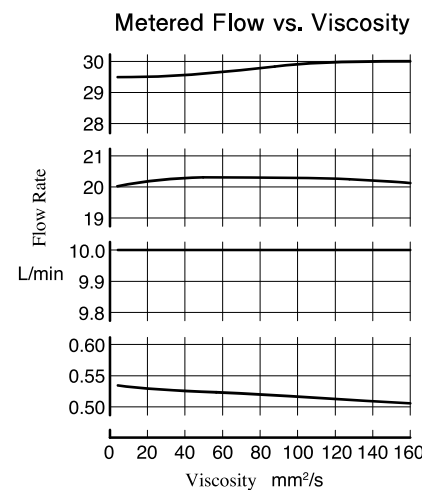
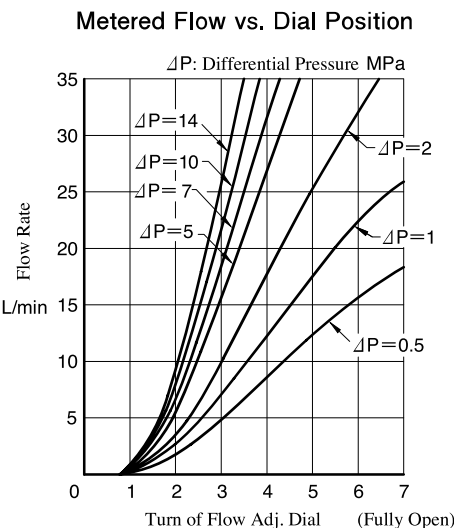
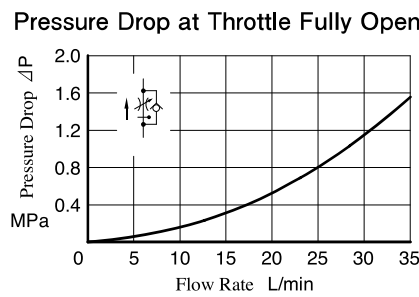
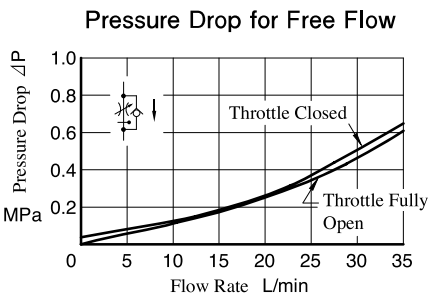
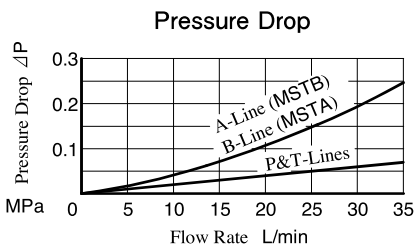


Graphic Symbols



Typical Performance Characteristics

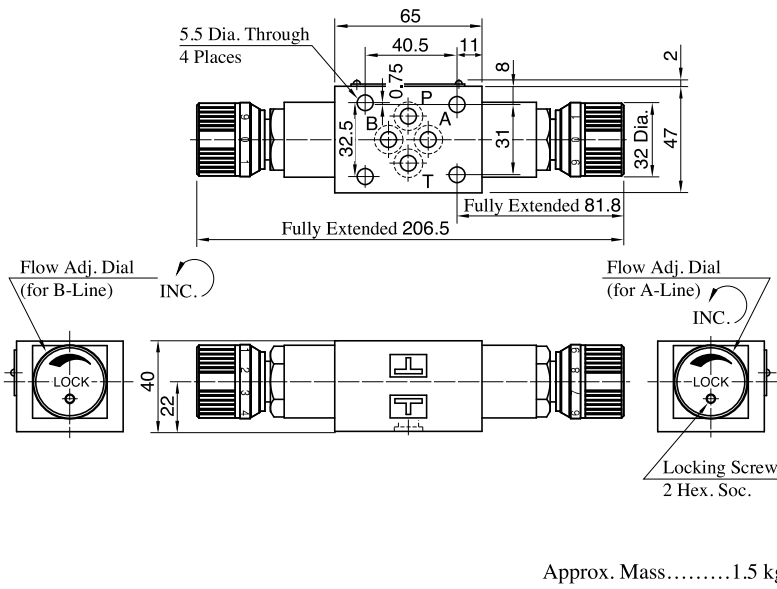
Hydraulic Fluid: Viscosity 35 mm²/s, Specific Gravity 0.850



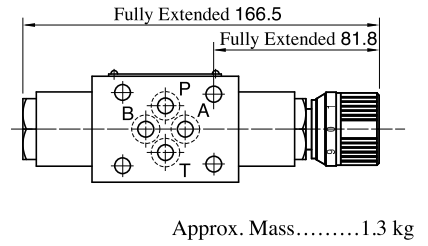
Instructions

- To make flow rate adjustment, loosen locking screw for the dial and turn the flow adjustment dial clockwise or anti-clockwise. For a decrease of flow, turn the dial clockwise. Be sure to re-tighten the locking screw firmly after the adjustment of the flow rate.

MSTW-01-X

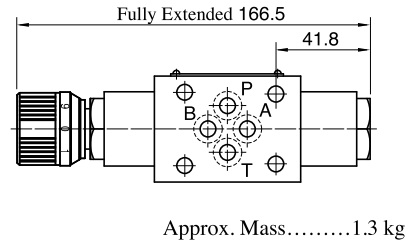


MSTA-01-X



For other dimensions, refer to "MSTW-01" in the drawing left.

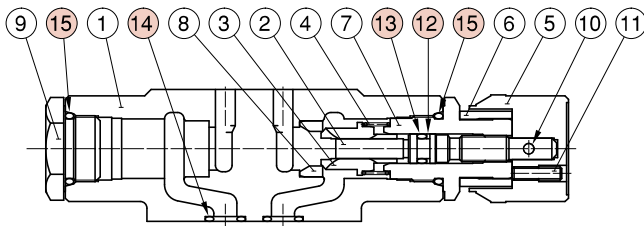
MSTB-01-X



For other dimensions, refer to "MSTW-01" in the drawing left.

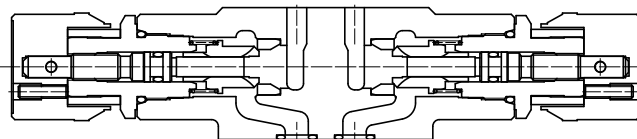
List of Seals

MSTA-01
MSTB-01
MSTW-01



MSTA-01-X

● MSTB-01-X: Flow control part is built in the left side.



MSTW-01-X

Item	Name of Parts	Part Numbers	Qty.		
			MSTA	MSTB	MSTW
12	Back-up Ring	BR JIS B 2401 -4-T2-P6	1	1	2
13	O-Ring	OR NBR-70-1 P6-N	1	1	2
14	O-Ring	OR NBR-90 P9-N	4	4	4
15	O-Ring	OR NBR-90 P18-N	2	2	2